



# GREAT SATURDAY TREK

WARA Spring 12 Hour ROGAINE  
Saturday, 10th October 1998

## LEGEND

SCALE 1:50,000, 5 metre contour interval



- Building
- Control  60
- Contours
- Dam
- Fence
- Hash House
- Magnetic North Line
- Out of Bounds
- Bitumen Road
- Major Gravel Road
- Track
- Watercourse
- Water Drop  W

## SETTERS AND VETTERS

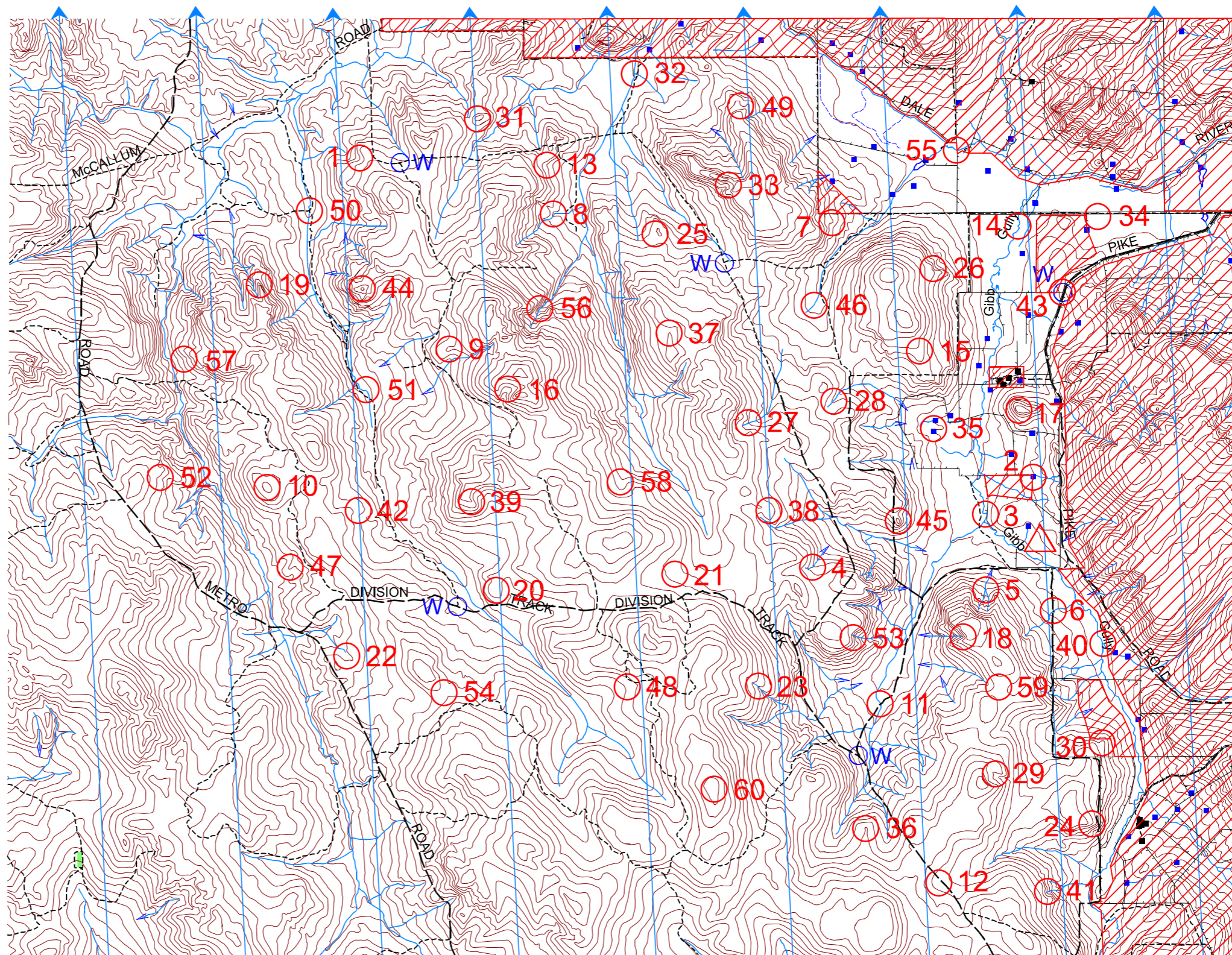
Ken Harrison	Greg Kirk	Karen Kirk
Ross Taplin	Dennis Sawers	Beth Sawers
David Gamble	James Kirk	Patrick Tremlett
	Lil O'Toole	

## SPECIAL THANKS TO:

Stan Dorman  
Fred Gilham  
Vinny Pike  
Brent and Judy Schilling  
Ian and Helen Schilling  
and CALM  
for the use of their land

Possession of this map does not give right of entry to this area.

This map was produced using OCAD by David Gamble. Data supplied by DOLA and used under copy license 393/93.



# Great Saturday Trek 12 Hour Rogaine. Saturday, 10th October 1998

No.	Description	Points	No.	Description	Points	Important information
1	Head of the Gully	10	35	The Dam, northern edge	60	<b>Control Cards</b>
2	The Dam, then 60m at 0 degrees	10	36	The Spur	60	
3	On the Watercourse Bend	10				From 0930 Sat.
4	The Watercourse Bend	10	37	The Spur	70	<b>Briefing</b>
5	The Watercourse Junction	10	38	A Knoll	70	
6	The Fence	10	39	The Spur	70	
			40	The Watercourse	70	0945 Sat.
7	The Spur	20	41	Head of the Watercourse	70	<b>Start</b>
8	A Watercourse Junction	20	42	The Broad Spur	70	
9	A Knoll	20				1000 Sat.
10	The Summit	20	43	Fence - Road Junction, then 80m at 210 degrees	80	<b>Finish</b>
11	Track - Watercourse Junction	20	44	The Summit	80	
12	The Broad Gully	20	45	The Knoll	80	2200 Sat.
			46	The Broad Gully	70	<b>Hash House</b>
13	Head of the Gully	30	47	The Spur	80	
14	The Watercourse, on a bend	30	48	The Broad Gully	80	
15	The Spur	30				Opens 1600 Sat.
16	The Broad Gully	30	49	Head of a Gully	90	Closed About Midnight
17	The Knoll	30	50	The Track Junction	90	Re-opens 0700 Sun.
18	Head of the Watercourse	30	51	The Watercourse, the Bend	90	<b>Fruit Drops</b>
			52	Northern Edge of a Rocky Outcrop	90	
19	The Spur	40	53	Head of the Gully	90	
20	A Knoll	40	54	In the Broad Saddle	90	At water drops
21	The Broad Gully	40				<b>Sunset</b>
22	Head of the Watercourse	40	55	The Watercourse - Fence Junction	100	
23	The Watercourse	40	56	The Watercourse, northern side, below a 4m Boulder	100	
24	The Spur	40	57	A 40x30m Rocky Outcrop, eastern edge	100	<b>Moonrise</b>
			58	The Broad Gully	100	
25	A 100x30m Rocky Outcrop, southern edge	50	59	The Saddle	100	
26	Head of the Gully, in a small clearing	50	60	The Summit	100	<b>Controls Used</b>
27	The Watercourse, 20m SE of a Rocky Outcrop	50				
28	The Gully	50				
29	A Watercourse	50				60
30	The Spur	50	Water			
			W	The Track Junction		<b>Total Points</b>
31	The Knoll	60	W	The Track Junction		
32	The Watercourse Junction, then 100m at 270 degrees	60	W	The Track Junction		
33	A Watercourse Junction	60	W	The Track Junction		
34	North West Corner of a Paddock	60	W	On the Road, near control 43		3300